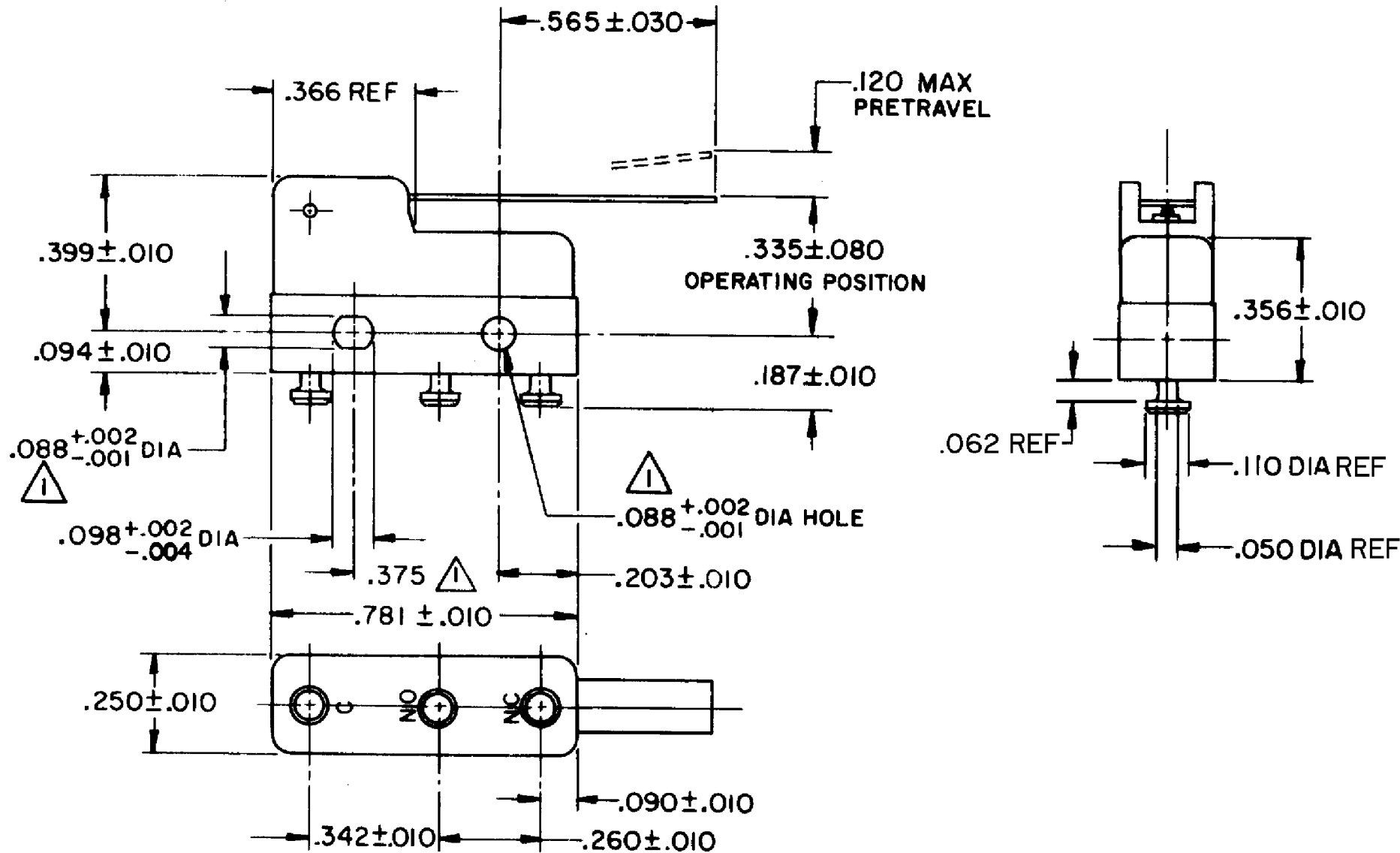
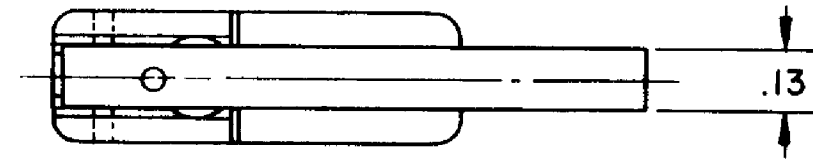


HONEYWELL
PART NUMBER
311SM2-T
PRODUCT CODE
TZA1150

| REV | DOCUMENT | CHANGED BY | CHECK |
|-----|----------|-------------|-------|
| 6 | 0038444 | KVS 09APR08 | ASD |



NOTE -
 ▲ MOUNTING HOLES WILL ACCEPT PINS OR SCREWS OF .087 MAX DIA ON .375 ± .002 CENTERS
 2- SWITCH WILL WITHSTAND TEMPERATURE OF 250°F
 3- TERMINALS ARE PLATED FOR SOLDERING

RELEASE NO. SR-11750
 REPLACES -

| CHARACTERISTICS | |
|-----------------------|-------------|
| OPERATING FORCE -- | 30 GRAM MAX |
| RELEASE FORCE-- | 5 GRAM MIN |
| DIFFERENTIAL TRAVEL-- | .027 MAX |
| OVERTRAVEL -- | .026 MIN |

| ELECTRICAL DATA | | |
|-----------------------------|-----------|-------------------------|
| CONTACT ARRANGEMENT SPDT | | |
| 30 VOLTS DC RATING | | |
| | SEA LEVEL | 50,000 FT |
| INDUCTIVE | 3 AMP | 2.5 AMP |
| RESISTIVE | 5 AMP | 5 AMP |
| MAXIMUM INRUSH 24 AMP | | |
| APPROVALS | UL, CSA | 5A, 250 VAC ~ BRAND L4 |

| |
|--------------------------|
| DESIGN UNITS: INCH |
| TOLERANCES UNLESS NOTED: |
| NO PLACE X ± |
| ONE PLACE .X ± |
| TWO PLACE .XX ± |
| THREE PLACE .XXX ± |
| FOUR PLACE .XXXX ± |
| ANGLES ± |
| THIRD ANGLE PROJECTION |
| |

| | | |
|--|----|----------|
| DRAWN | VK | 20FEB 08 |
| CHECK | RJ | 20FEB 08 |
| THIS DRAWING COVERS A PROPRIETARY ITEM AND IS THE PROPERTY OF HONEYWELL. THIS DRAWING IS NOT TO BE COPIED OR USED WITHOUT THE PERMISSION OF HONEYWELL. | | |
| INTERPRET PER ANSI Y14.5M-1982 OTHER HONEYWELL ENGINEERING STANDARDS MAY APPLY | | |
| RASTER | | |

| | | | |
|-------------------------|----------|--------------------|--------------|
| Honeywell | | | |
| TITLE SWITCH - BASIC | | | |
| SIZE | TYPE | DRAWING NAME | REV |
| B | I | 311SM2-T | 6 |
| SCALE | - | WEIGHT .006 LB MAX | SHEET 1 OF 1 |